



Your Complete Home Extension Guide

Everything You Need to Know About Extending
Your Home in Sydney Before You Start

Your Ultimate Guide To Creating Your Dream Home Extension



1300 005 600



sales@esteemconstructions.com.au



esteemconstructions.com.au

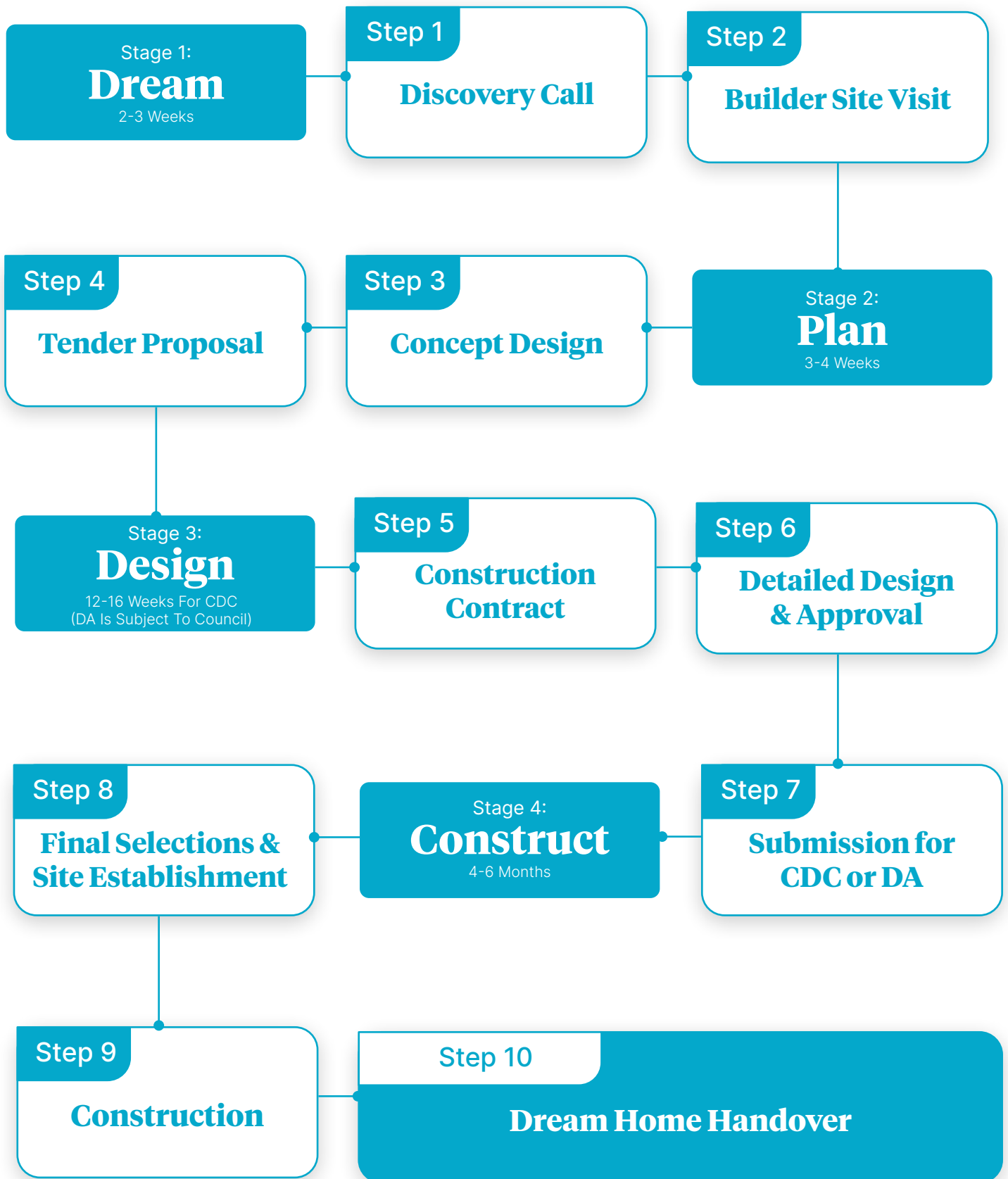


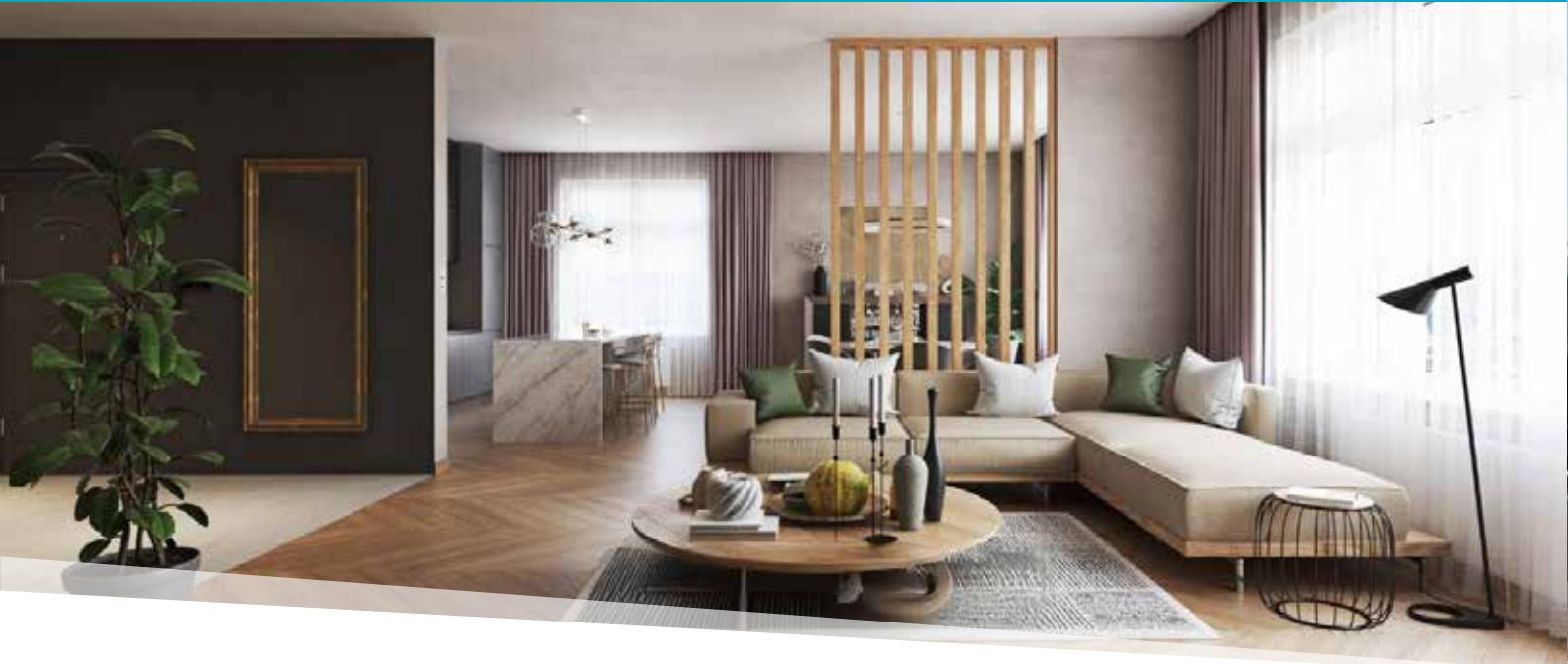
Everything You Need to Know About Extending Your Home in Sydney Before You Start

Extending your home is an exciting venture that can significantly enhance your living space and increase your property's value. However, it involves careful planning and understanding of the process and regulations involved. This guide will walk you through everything you need to know before starting your home extension project in Sydney, breaking it down into manageable stages and steps.



Your Construction Journey





Stage 1: Dream

Step 1: Discovery Call

The journey begins with a discovery call. This initial conversation is crucial for understanding your vision, needs, and budget. It's an opportunity to discuss what you hope to achieve with your home extension, any specific features or design elements you desire, and your timeline.

Why is it important?

A discovery call helps establish a clear understanding between you and the builder, ensuring that both parties are on the same page from the start. Esteem Constructions offers a comprehensive discovery call to align with your home extension goals.

Step 2: Builder Site Visit

Following the discovery call, the next step is a site visit by your builder. This visit is valued between \$300-600 and involves a thorough assessment of your existing property to identify any potential challenges and opportunities.

What to expect?

During the site visit, the builder will take measurements, assess the structural integrity of your home, and discuss design possibilities. This step is vital for developing an accurate and feasible concept design.





Stage 2: Plan

Step 3: Concept Design

With the information gathered from the discovery call and site visit, the builder will create a concept design. This design is valued between \$1,500-2,500 and provides a visual representation of your proposed extension, including layout, style, and key features.

Importance of Concept Design:

The concept design helps you visualize the final result and make any necessary adjustments early in the process. Esteem Constructions works closely with clients to ensure the concept design meets their expectations and requirements.

Step 4: Tender Proposal

Once the concept design is finalized, the next step is the tender proposal. This document outlines the estimated costs, timelines, and scope of work for your project. It's essential to review this proposal carefully to ensure all aspects of the project are covered.

Review and Approval:

Going through the tender proposal allows you to understand the financial and time commitments involved. Esteem Constructions provides detailed and transparent proposals to give you confidence in your investment.





Stage 3: Design

Step 5: Construction Contract

After approving the tender proposal, you'll enter into a construction contract with your builder. This contract legally binds the agreement and includes all the details of the project, such as payment schedules, timelines, and responsibilities.

Key Elements of the Contract:

- Detailed scope of work
- Payment schedule
- Project timeline
- Warranties and guarantees

Step 6: Detailed Design & Approval

The detailed design phase involves creating comprehensive architectural and engineering plans. These plans will be used to obtain necessary approvals and guide the construction process.

Design Considerations:

Ensure the detailed design reflects your vision and complies with Sydney's building regulations. Esteem Constructions prioritizes precision and compliance during this stage to avoid future complications.





Step 7: Submission for CDC or DA

In Sydney, home extensions typically require either a Complying Development Certificate (CDC) or a Development Application (DA). The choice depends on the scale and complexity of your project.

Understanding CDC and DA:

- **CDC:** Faster approval process, suitable for straightforward extensions that meet specific criteria.
- **DA:** Required for more complex projects, involves a longer approval process and public notification.

Esteem Constructions handles the submission process, ensuring all documentation is complete and accurate to expedite approval.

Stage 4: Construct

Step 8: Final Selections & Site Establishment

Before construction begins, you'll make final selections for materials, finishes, and fixtures. This step ensures that all elements of your extension align with your preferences and the overall design.

Site Establishment:

The builder will prepare the site for construction, including setting up temporary facilities, securing permits, and ensuring safety measures are in place.





Step 9: Construction

The construction phase is where your vision starts to come to life. This stage involves the actual building work, from foundation to finishing touches.

Project Management:

Esteem Constructions provides comprehensive project management to keep the project on schedule and within budget. Regular updates and site visits ensure you are informed and involved throughout the process.

Step 10: Dream Home Handover

Once construction is complete, the final step is the handover of your newly extended home. This involves a thorough inspection to ensure everything meets the agreed standards and specifications.

Handover Process:

- Final walkthrough and inspection
- Addressing any minor adjustments or corrections
- Providing documentation and warranties

Esteem Constructions prides itself on delivering high-quality results and ensuring client satisfaction at the handover stage.





Sydney Home Extension Laws and Policies

When planning a home extension in Sydney, it's essential to be aware of local laws and policies to ensure compliance and avoid delays. Here are some key regulations:

Building Codes and Standards

All extensions must comply with the Building Code of Australia (BCA) and relevant Australian Standards. These codes cover structural integrity, fire safety, energy efficiency, and more.

Zoning Regulations

Sydney's zoning regulations dictate what types of buildings and extensions are permissible in different areas. It's crucial to check the zoning of your property to understand any restrictions.

Heritage Considerations

If your home is heritage-listed or in a conservation area, additional regulations may apply. These can include restrictions on external alterations and requirements to preserve historical features.

Neighboring Properties

Extensions that impact neighboring properties, such as overshadowing or overlooking, may require additional assessments and approvals.





Environmental Impact

Consider the environmental impact of your extension, including energy efficiency, water usage, and waste management. Sustainable design choices can also benefit you through energy savings and enhanced comfort.

Conclusion

Extending your home in Sydney is a significant investment that requires careful planning and adherence to local regulations. By following the stages and steps outlined in this guide, you can ensure a smooth and successful home extension project.

Esteem Constructions is here to support you every step of the way, offering expert advice, high-quality craftsmanship, and dedicated client service. To get started on your dream home extension, contact Esteem Constructions for a free consultation today. Our team will guide you through the process, ensuring your extension seamlessly blends with your existing home and meets your needs.

For further details and personalized guidance on your home extension project, [reach out](#) to Esteem Constructions. With our experience and commitment to excellence, we make your home extension dreams a reality.





Ready to Transform Your Sydney Home? Contact Us Today!

Use any of the following options to receive a FREE
consultation.

 1300 005 600

 sales@esteemconstructions.com.au

 esteemconstructions.com.au

1,500+
SPACES TRANSFORMED

1,700+
PROJECTS DELIVERED

15+
YEARS EXPERIENCE